

## DALI MSensor 02

Multi-sensor for DALI system



### Product description

- \_ Component of the comfortDIM system (DALI standalone)
- \_ With ambient light dependent control and presence detection
- \_ Simple group assignment via rotary switch
- \_ Multiple MSensors possible in a group
- \_ Can be remote controlled
- \_ Lighting control and presence detection can be deactivated
- \_ Individual adjustment of the parameters with configuration software
- \_ Multi-master compatible: Multiple control modules are possible in a DALI system
- \_ Power supply via DALI line
- \_ 5 years guarantee

### Housing properties

- \_ Casing: polycarbonate, white
- \_ Type of protection IP20

### Website

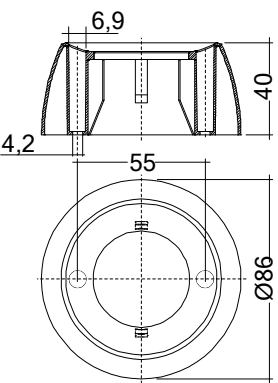
<http://www.tridonic.com/28000894>



**DALI MSensor 02**

Multi-sensor for DALI system

The complete data sheet for this product is available in the Downloads section.



**Ordering data**

Type	Article number	Figure	Packaging, carton	Weight per pc.
DALI-MSensor 02 5DPI 41rs Surface mounting	28000894	4	20 pc(s).	0.05 kg

**Technical data**

Supply via	DALI cable
Current draw	6 mA from DALI
Mounting height	5 m
Detection angle for PIR detection	90°
Detection angle for light measurement	70°
Operating temperature	0 ... +50 °C
Storage temperature ts	-25 ... +55 °C
Type of protection	IP20

**Approval marks**



**Standards**

EN 61547, EN 61347-1, EN 61347-2-11, EN 55015

**Specific technical data**

Type	Detection						
	Ø of detection range, mounted at a height of 2.5 m	Extension of the detection area <sup>①</sup>	Swivel design	Swivel range	Detection angle	Light measurement at the sensor head <sup>②</sup>	Infra-red control rang
DALI-MSensor 02 5DPI 41rs	5 m	-	No	0°	90°	10 – 650 lx	5 m

① If mounted at a height of 2.5 m and swivelled through 15 °.

② The measured value at the sensor head corresponds to approx. 15 to 2,000 lux on the surface measured.